



EasyWay



Getting Inspired

Jon Harrod Booth
Independent Consultant
Chair BSI National ITS Committee

DATEX II Forum Berlin
March 16/17 2010

Location, Location – Glimpse of complexity – a dream of integration

INSPIRE – what is it?

Going Linear – Changes to DATEX II

How does this affect you?

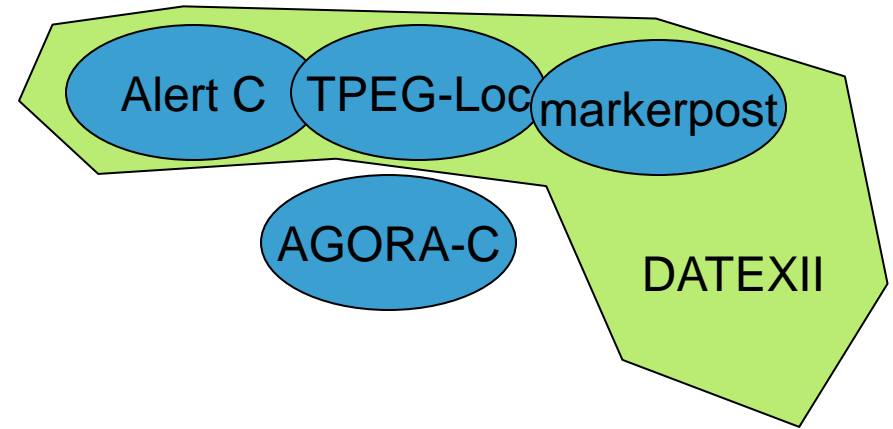
We live in a joined up world

**Your experience (and your brain) is very good at ‘mashing up’
different stream of information in different forms**

**Sadly our applications and standards (location referencing standards)
just aren’t that straightforward**

Location Referencing

- The ITS world knows of:
 - ALERT C referencing
 - TPEG referencing (includes subtypes)
 - AGORA C
 - References relative to marker post
- We also have:
 - Geographic data files (GDF) for describing networks
- But of course we are not alone...
 - In this session we see Open_LR, as well as public transport loc ref
 - And then there is the mapping/GIS (Geographic Information System) world
- Mapping/GIS
 - Approaches globally applicable and globally standardised
 - OGC (Open Geospatial Consortium) and ISO/TC211 (Geographic Information)
 - *Most have at least heard of GML (ISO 19136)*
- We have many different (application centric approaches) – interoperability is a real challenge



INSPIRE is a major European initiative in the geo-spatial information domain. European Directive (2007/2/EC)

- Establishes an Infrastructure for Spatial Information in the EU
- Environment focussed
- Came into force 15 May 2007

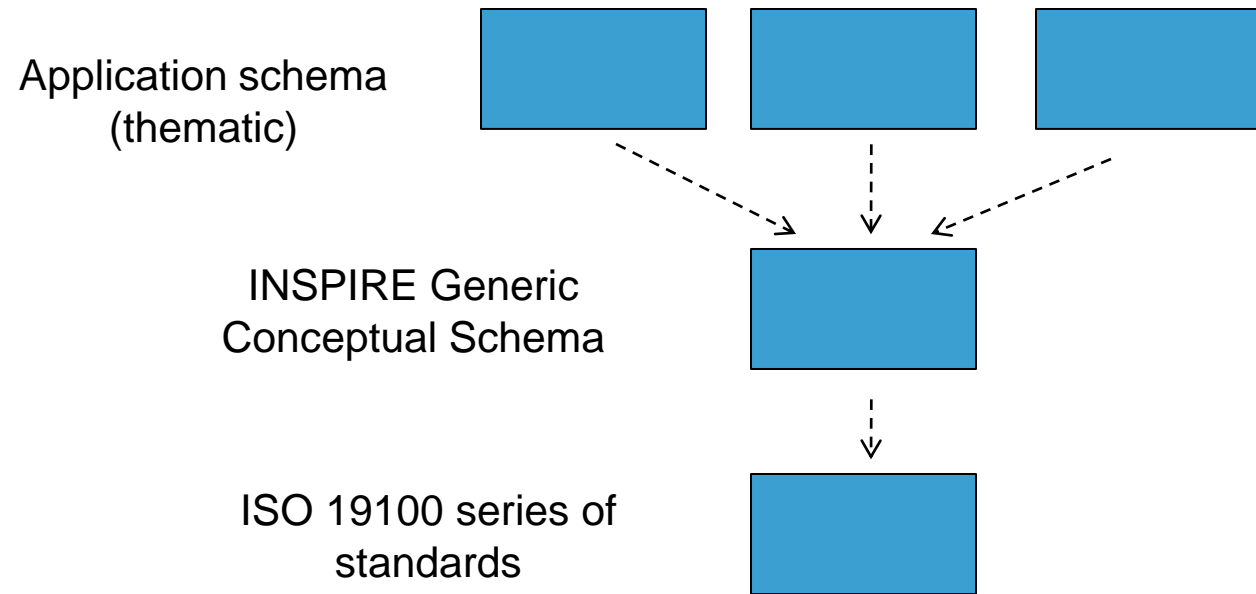
The Association for Geographic Information (UK) wrote:

- “Potentially all users and prospective users of spatial information will be affected....
- This will require much greater openness and, in many cases, more expertise than often currently available.”

Importantly for traffic management INSPIRE includes a theme called *Transport Networks*

Consequences for public bodies:

- All public bodies will be required to create metadata
- Provide access to data they collect or create, in standard form
- INSPIRE specifications for network referencing and data definitions (Transport Networks) will be out of alignment with those in common practice within the many Highway Administration
- INSPIRE is centred on ISO 19100 series standards



INSPIRE – example (UK)

- INSPIRE is a key driver behind the UK Location Strategy
 - To maximise the value to the public, government, UK business and industry of geographic information. It will provide a consistent framework to assist national, regional and local initiatives and service delivery
 - All about “joined up government”
- Similar initiatives across all Member States
- Transposition into MS national law has the potential to affect every road administration

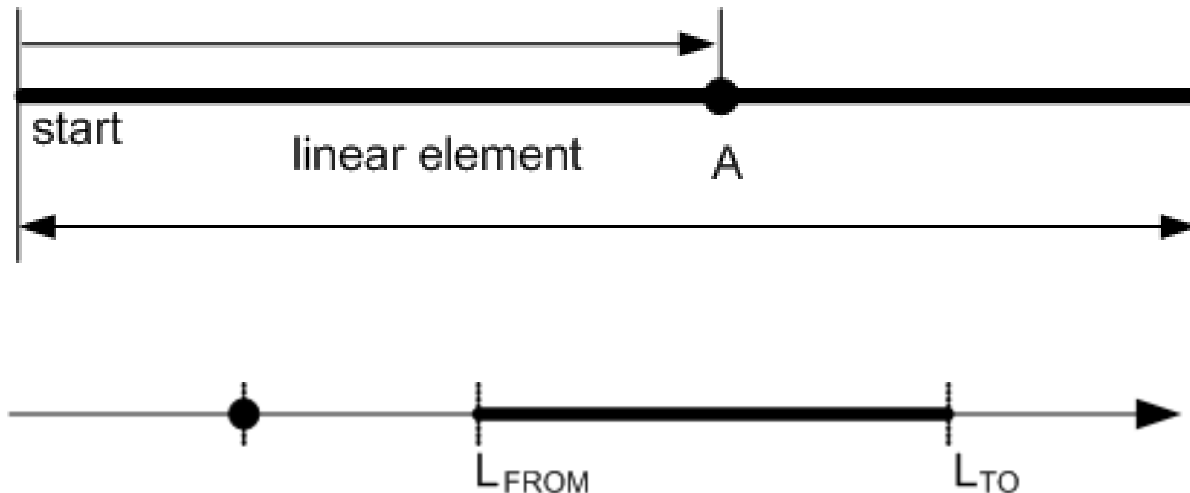
- For more information - <http://inspire.jrc.ec.europa.eu/>

Relevance to ITS:

- INSPIRE explicitly mentioned in Clause 16 of the current text of the proposed ITS Directive
- **Sadly INSPIRE TN is effectively yet another new Standard**

INSPIRE uses ISO 191xx standards

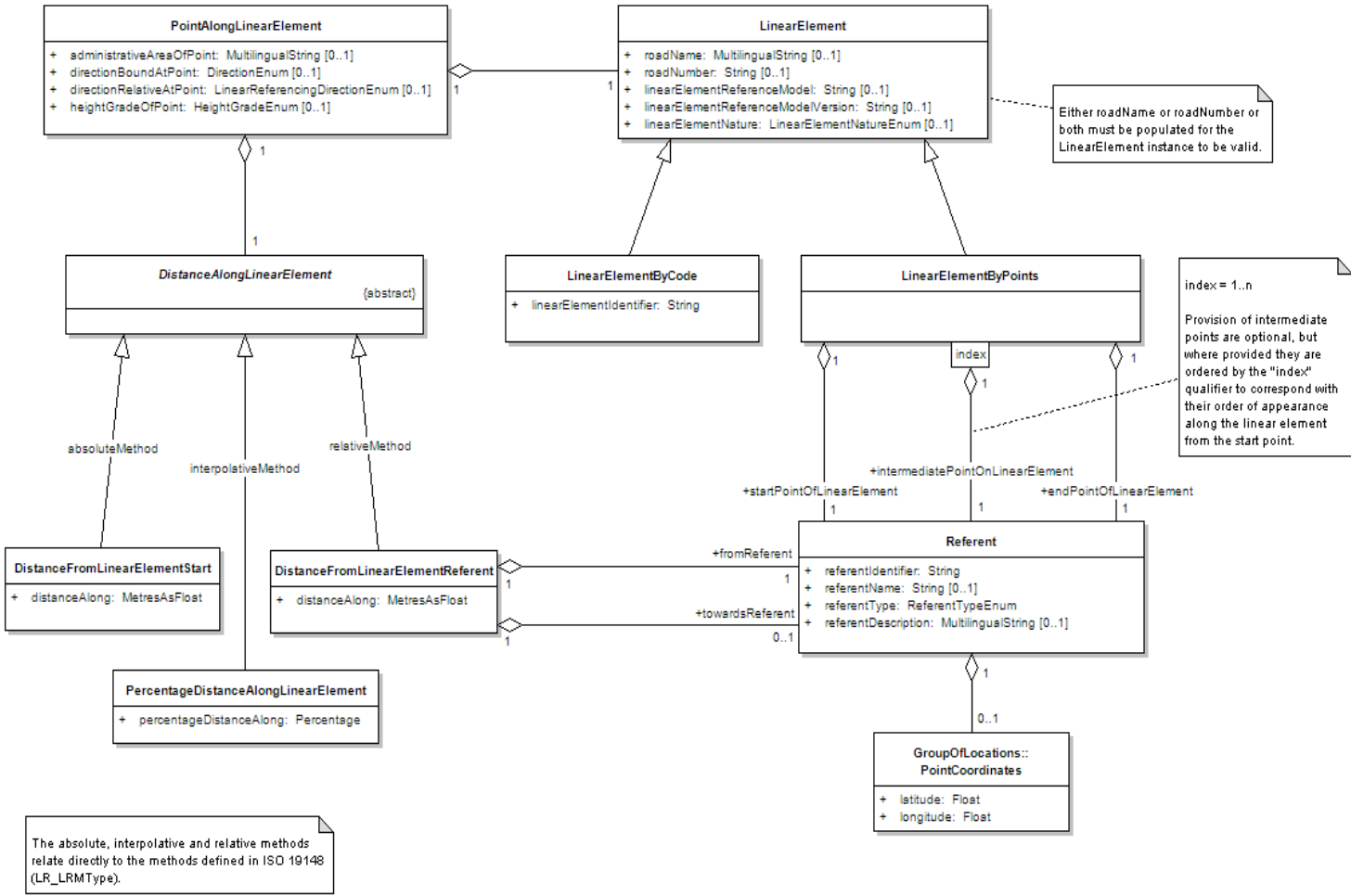
- INSPIRE specifications use ISO 19100 series standards' concepts, including linear referencing
- ISO recently standardised ISO 19148 Linear Referencing



- In the limit LR can operate without reference to any spatial co-ordinates

DATEX II has been extended to support Linear Referencing

- Provides a simplified version of the ISO19148 model



So what's does this mean for you...?



Surprisingly large number of road administration use linear referencing for asset management purposes

In principle, they may all use/know of INSPIRE compliant networks, in the future

- Will these be freely available to all?

Strong argument for INSPIRE forming some part of road administrations core road network referencing models

- The UK Highways Agency is developing a single core road network model for all corporate business function which uses many of these concepts

This creates the ability to link into use of the (Transport) Road Network models being made available through INSPIRE

- Unlike TPEG-Loc and AGORA-C which use map matching, this has to potential to reference to a common map
- But it has some rather strong commercial competitors

INSPIRE as a EU Directive is an important consideration – likely that road administrations will have to have an INSPIRE data publication facility and an INSPIRE road network model

This uses ISO 191xx standards, including 19148 for Linear Referencing

A Linear Referencing capability has been included into DATEX

Sadly this does not reduce the complexity of location referencing solutions...

...Not yet part of an overall strategy (which of course is missing)

Thank You for Your Attention

Dr Jon Harrod Booth
+44 7990 520 404
jon@harrodbooth.com