



# Changing Roles in Traffic Management

*Datex Forum 2012 – Stockholm*

*Carlo van de Weijer, TomTom International*





# Portfolio

## Consumer



## Automotive



## Business Solutions



## Licensing



# Using community feedback

- TomTom has more than 80 Million customers
- Most of them are willing to contribute to make TomTom's systems better
- TomTom uses it's connected navigation strategy to establish this



Off-line connected:  
TomTom Home

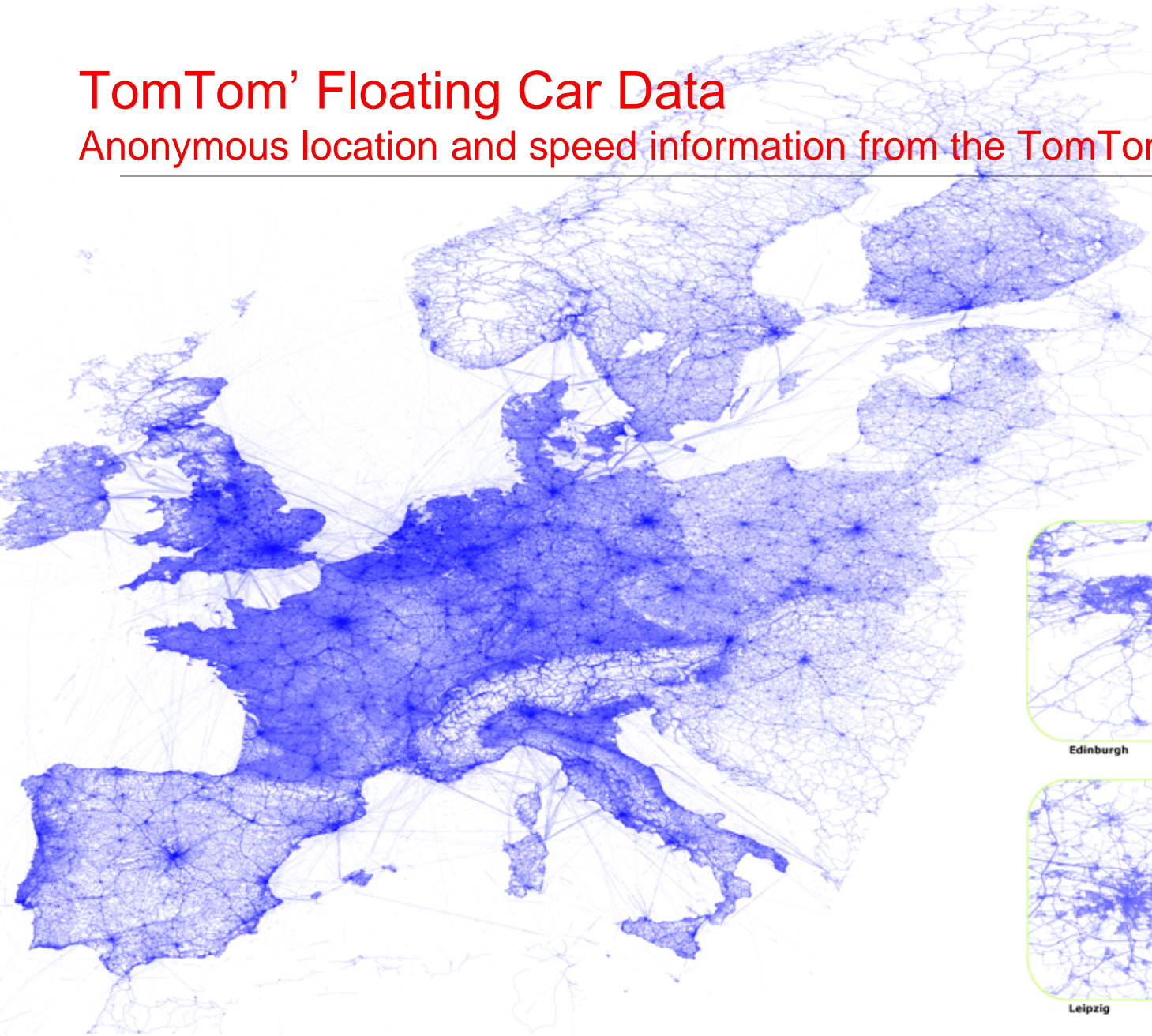


On-line connected:  
TomTom LIVE

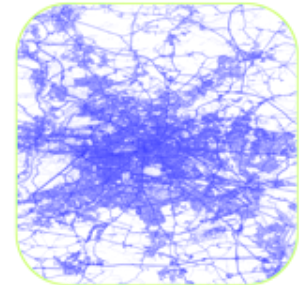


# TomTom' Floating Car Data

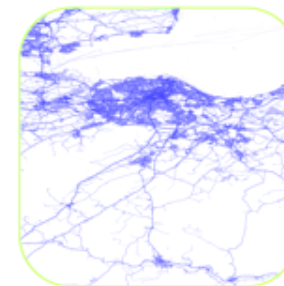
Anonymous location and speed information from the TomTom community



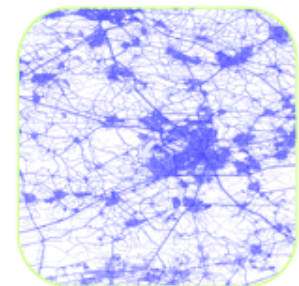
Amsterdam



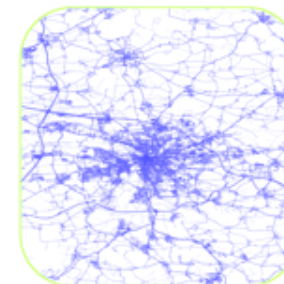
Berlin



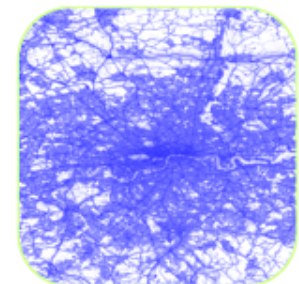
Edinburgh



Eindhoven



Leipzig



London



# TomTom' Floating Car Data

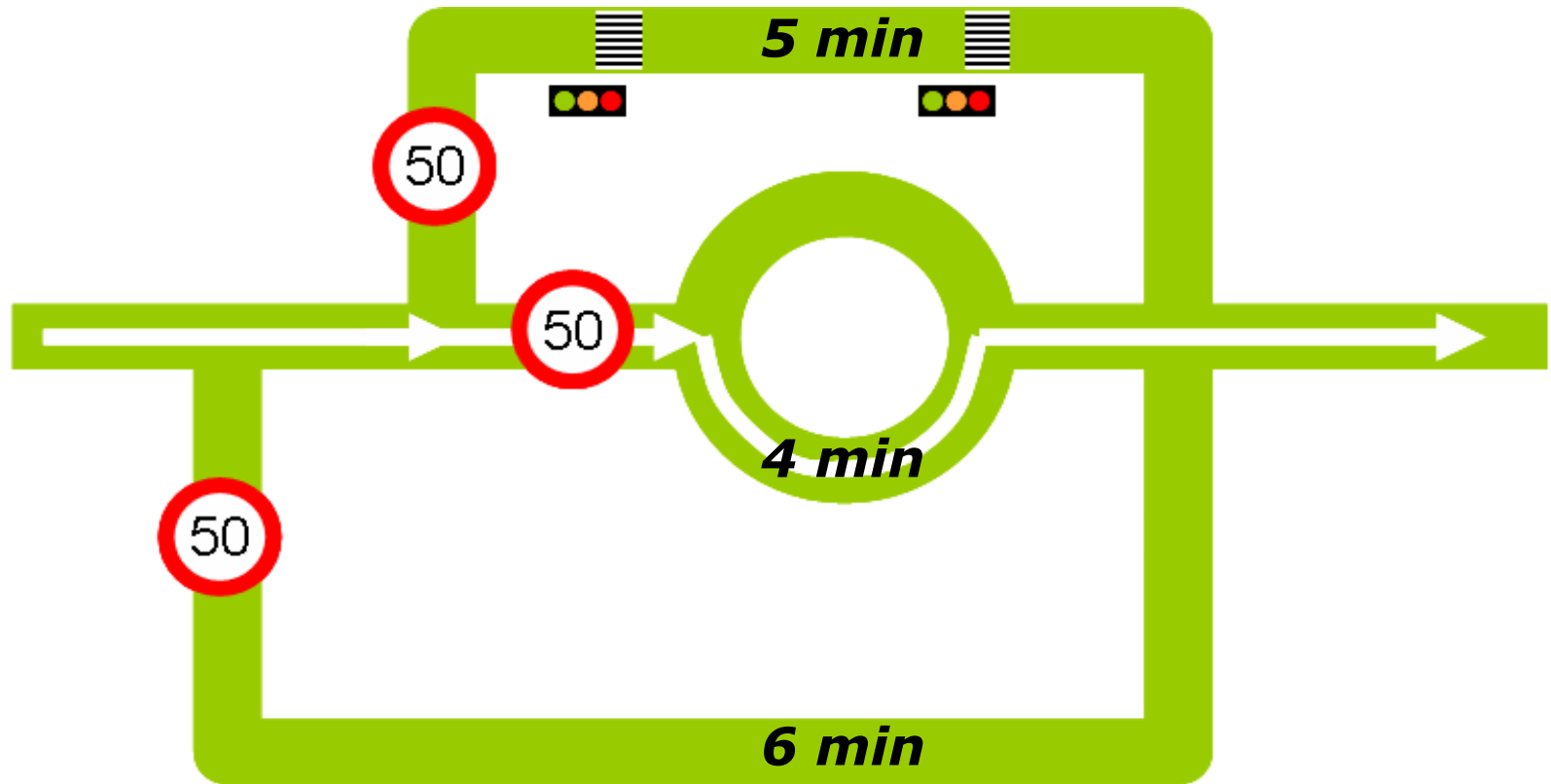
## Anonymous location and speed information from the TomTom community

---

- TomTom historical database contains over 5.000 billion observations (currently growing with >4 billion measurements per day)
- On top of that we receive real-time floating car data from a fast growing fleet of connected GPS probes (currently  $\pm 5.5M$ ) :
  - Car centric data (mainly cars, also vans and trucks)
  - Anonymised, compliant to privacy regulations
  - High sample frequency (1 position per second)
  - Accurate positioning
  - High synchronisation frequency (once per 1-3 minutes)
  - Increasing user frequency
- And we receive Floating Phone data from 80M subscribers in Europe

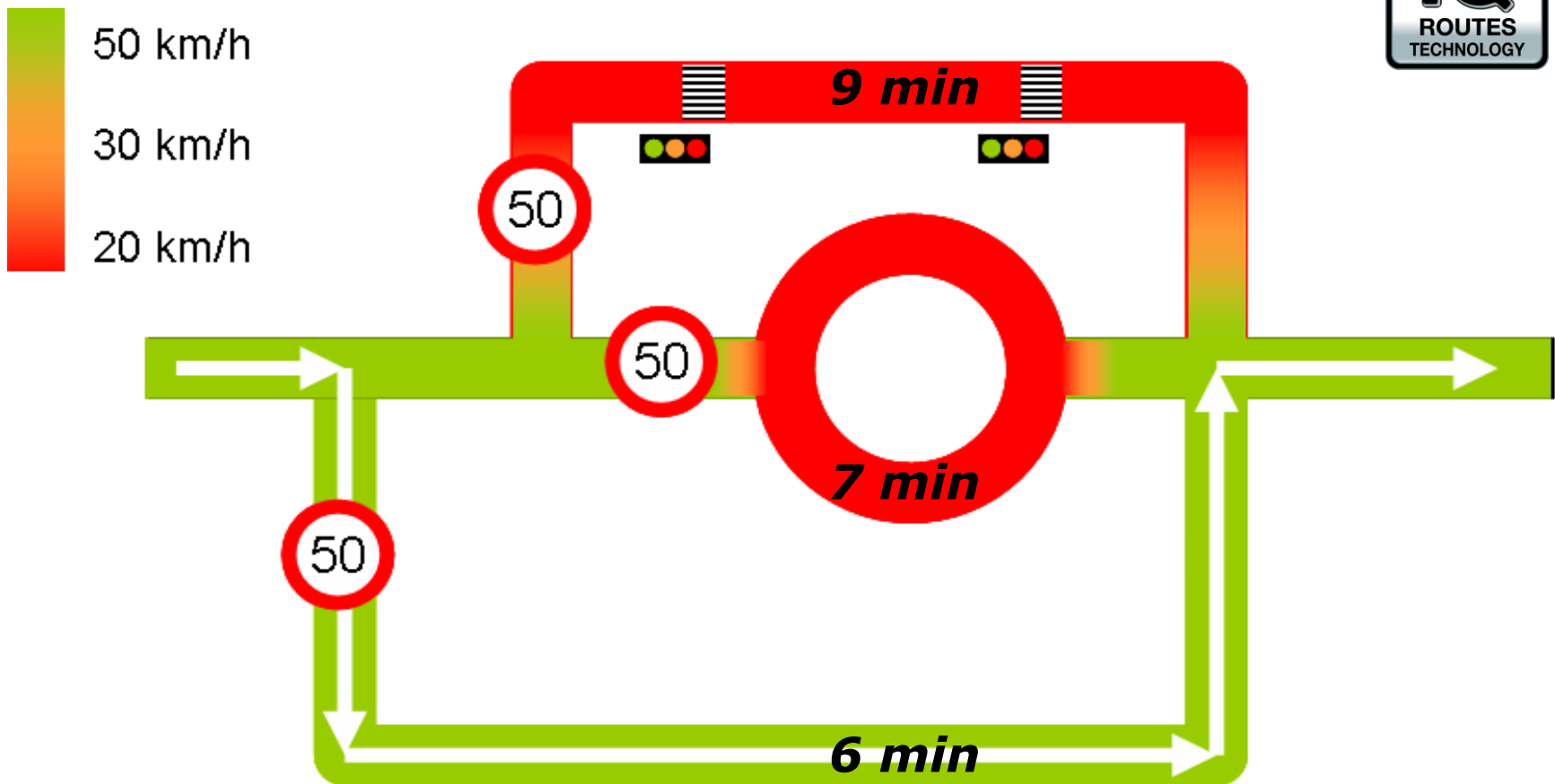
# Using Community Feedback for Better Routing

Traditional navigation system:



# Using Community Feedback for Better Routing

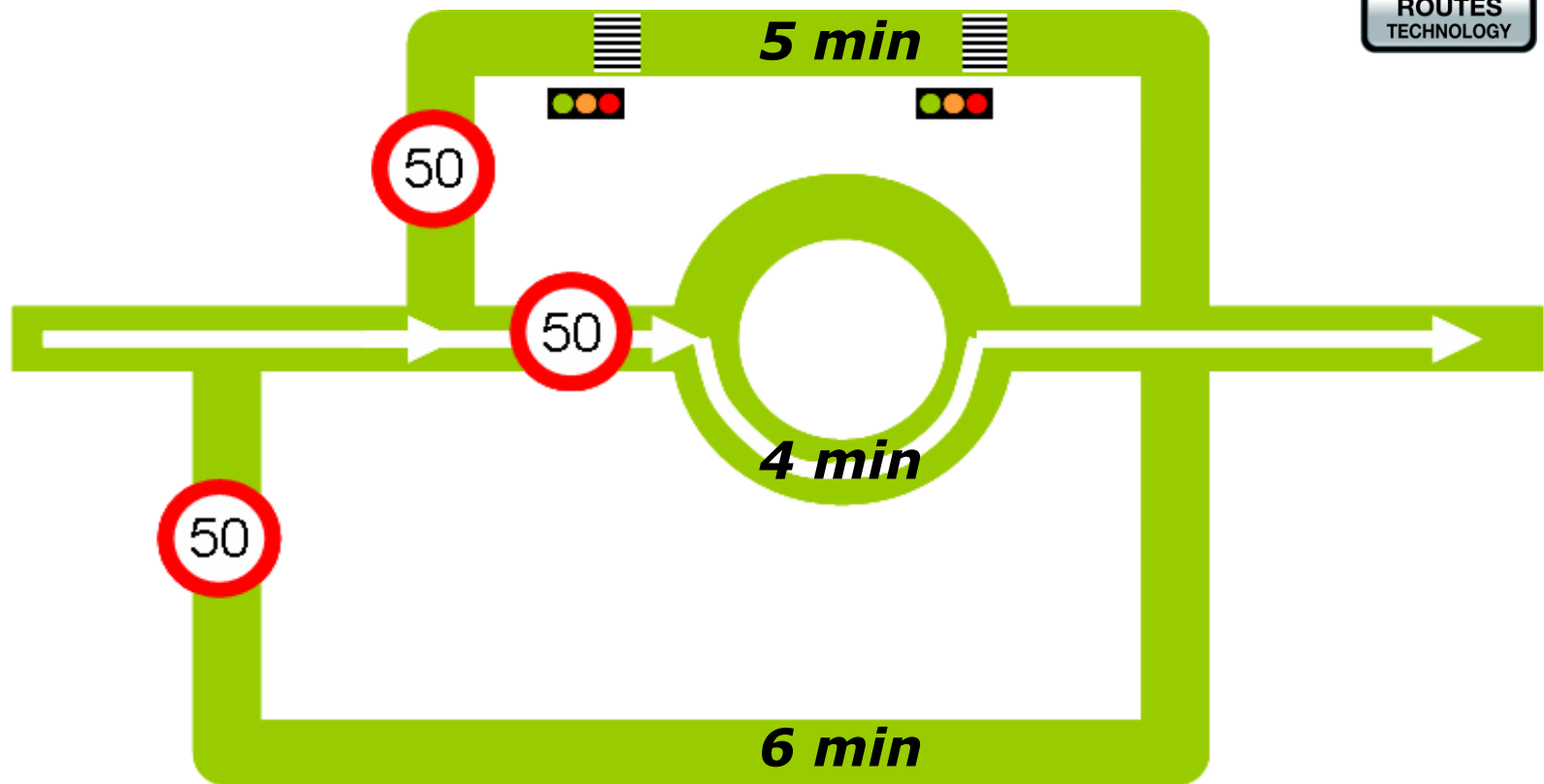
TomTom IQ Routes navigation system:



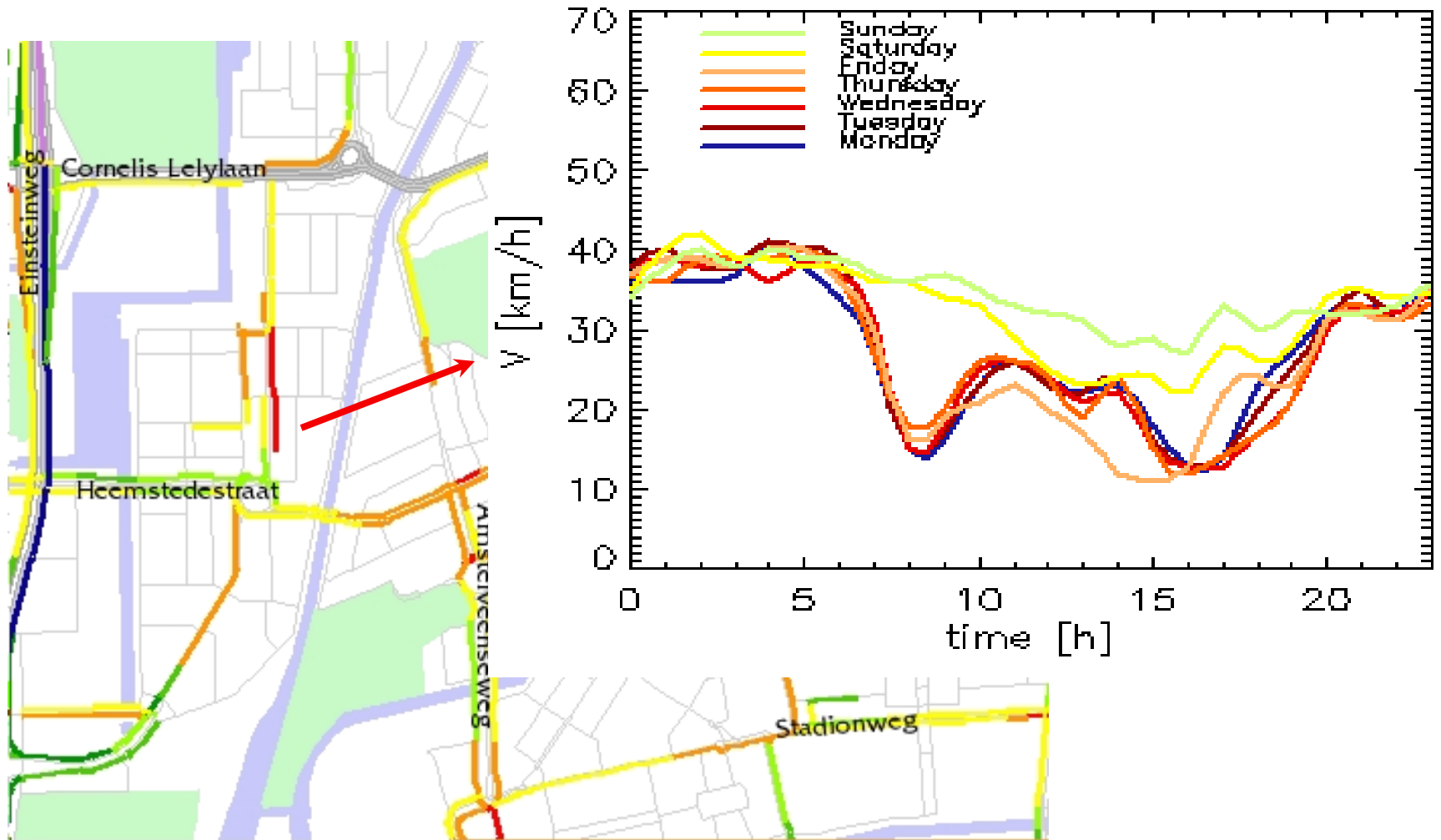


# Better Routing, time dependent

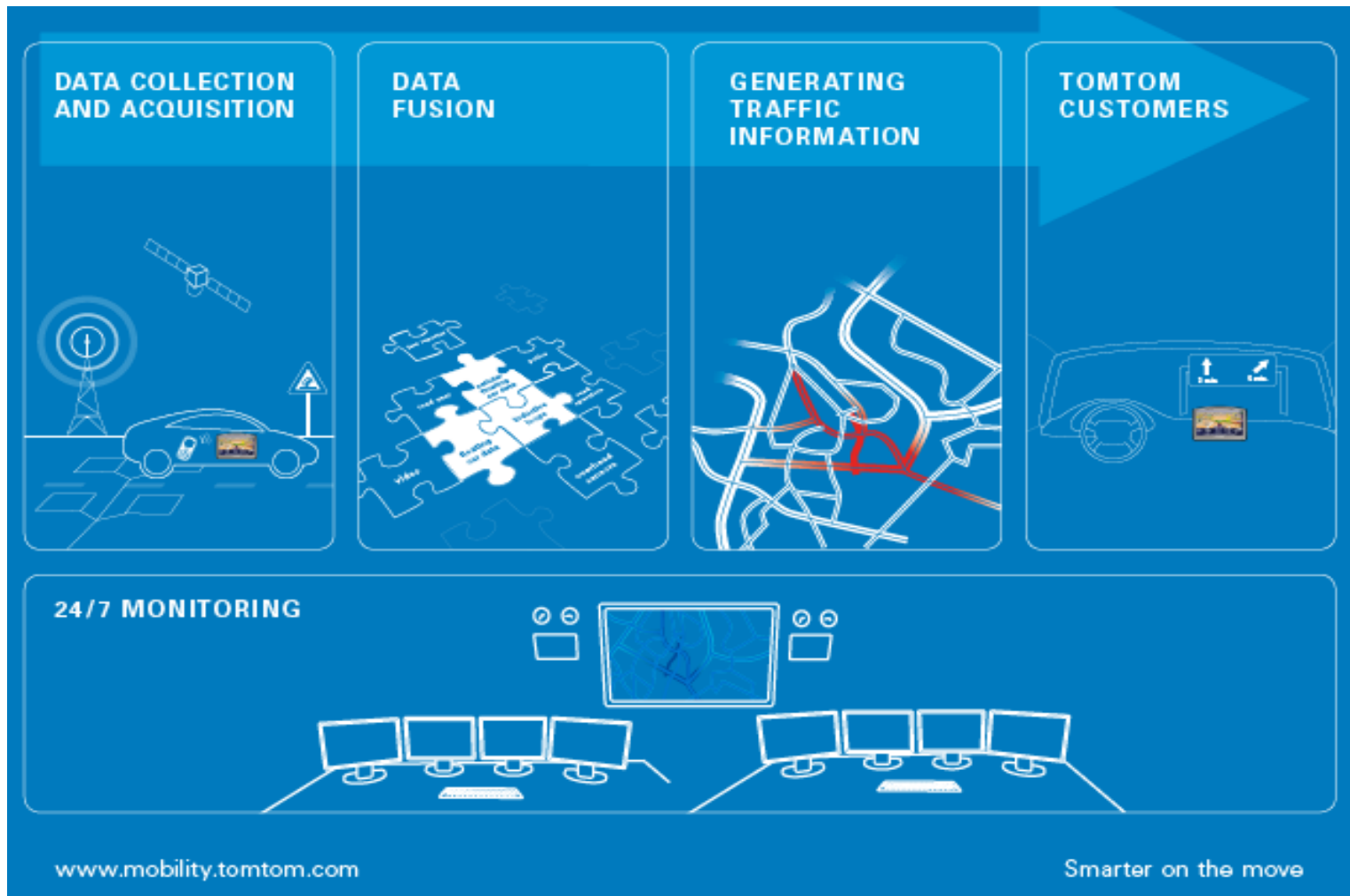
TomTom IQ Routes navigation system during night:



# Detailed information on all important roads



# Using real-time community feedback: HD Traffic



# February 3<sup>rd</sup>, 2012. 11.45; Snow in the Netherlands



[zoeken]

Buienradar

actueel weer

verwachting

zon & wolken

foto's

video's

mijn radar

winter

gadgets

623

-6

.mobi

## Buienradar

### Europa

afgelopen 3 uur

loop 6, 9, 24 uur

wolken & radar

bliksem Europa

[13:45](#) [13:30](#) [13:15](#)

[13:00](#) [12:45](#) [12:30](#)

[12:15](#) [12:00](#) [11:45](#)

[11:30](#) [11:15](#) [11:00](#)

[10:45](#) [10:30](#) [meer..](#)

Google maps

archief Europa

### verwachting

komende 3 uur

komende 3 dagen

[14:00](#) [14:15](#) [14:30](#)

[14:45](#) [15:00](#) [15:15](#)

[15:30](#) [15:45](#) [16:00](#)

[16:15](#) [16:30](#) [16:45](#)

### mijn radar

uw radar instellen

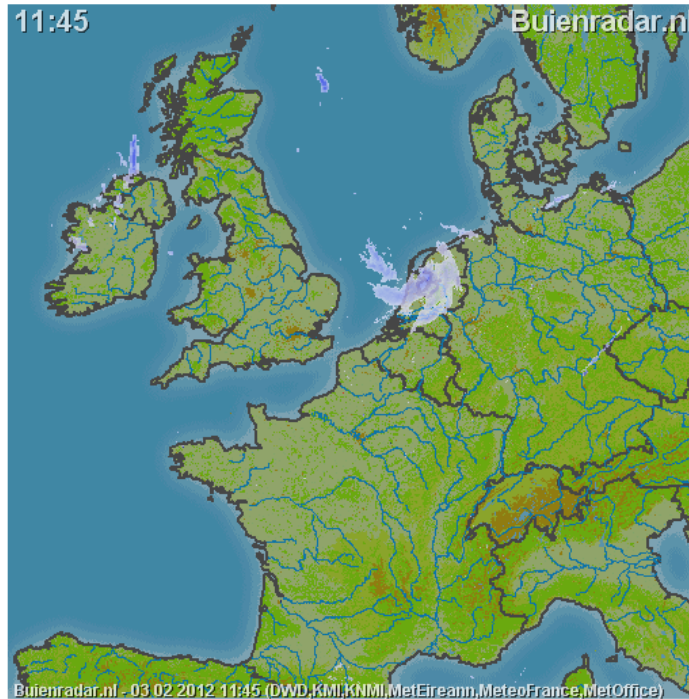
### Nederland

afgelopen uur

komende 3 uur

onweer Nederland

archief Nederland

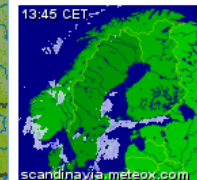
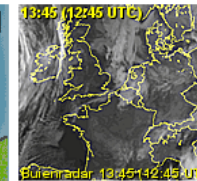


Buienradar.nl - 03 02 2012 11:45 (DWD,KMI,KNMI,MeteoEireann,MeteoFrance,MetOffice)

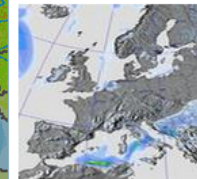
Herladen pagina

Elke 5 minuten

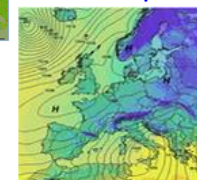
(C)opyright Buienradar B.V. 2012 - 2-3-2012 - Source DWD, KMI, KNMI, Met



### Regen verwachting



### Luchtdruk & temperatuur





# www.tomtom.com/livetraffic



[Shopping cart](#) | [MyTomTom login](#) | [Create account](#)

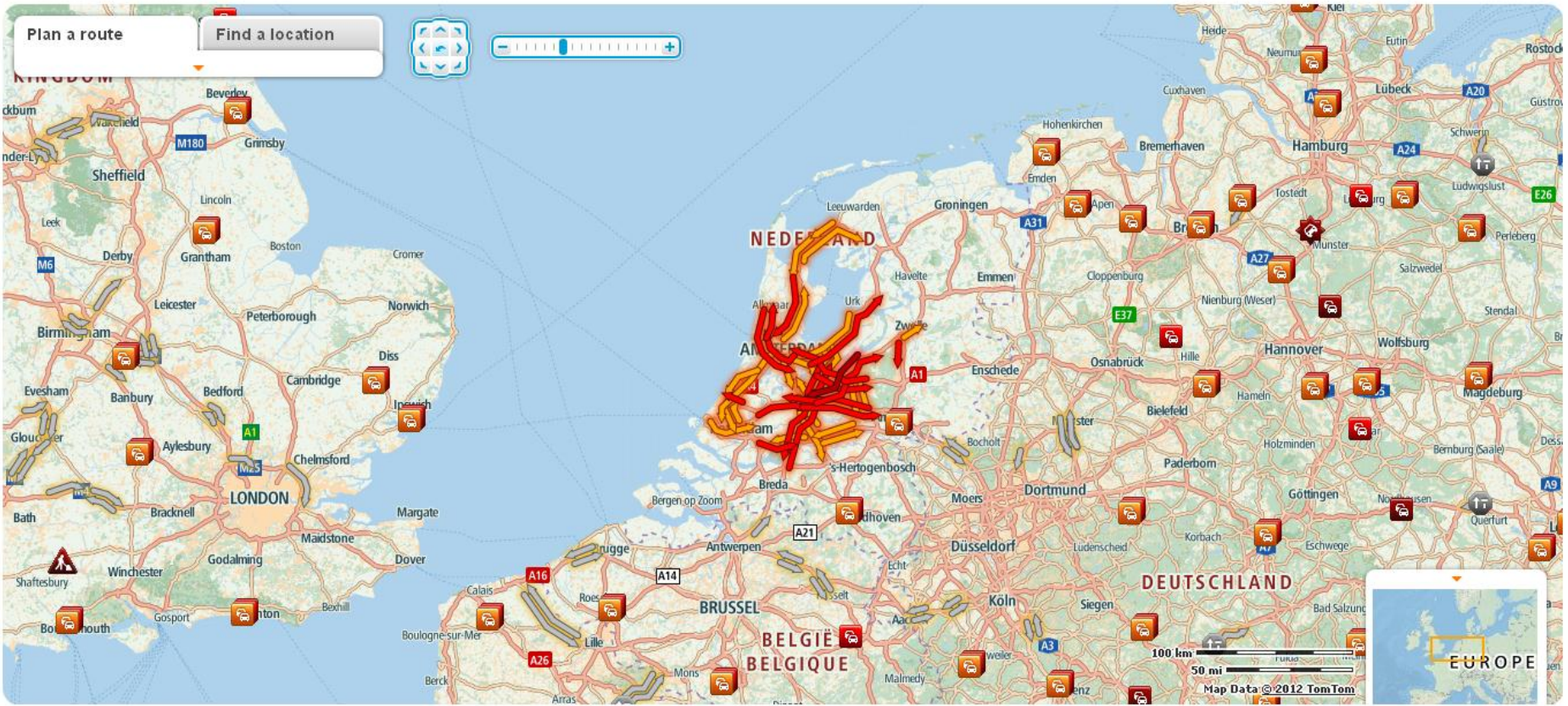
[Home](#) | [Products](#) | [Maps](#) | [Services](#) | [Live Traffic](#) | [Where to Buy](#) | [Support](#) | [About TomTom](#)

English

## Route Planner

[Link](#) | [Legend](#) | [Help](#) | [Print](#) | [Home location](#)

Show traffic information  
updated 2 min ago



Copyright © 2012 TomTom International B.V. All rights reserved. [Terms of use](#)



# www.tomtom.com/livetraffic



[Shopping cart](#) | [MyTomTom login](#) | [Create account](#)

[Home](#) | [Products](#) | [Maps](#) | [Services](#) | [Live Traffic](#) | [Where to Buy](#) | [Support](#) | [About TomTom](#)

English

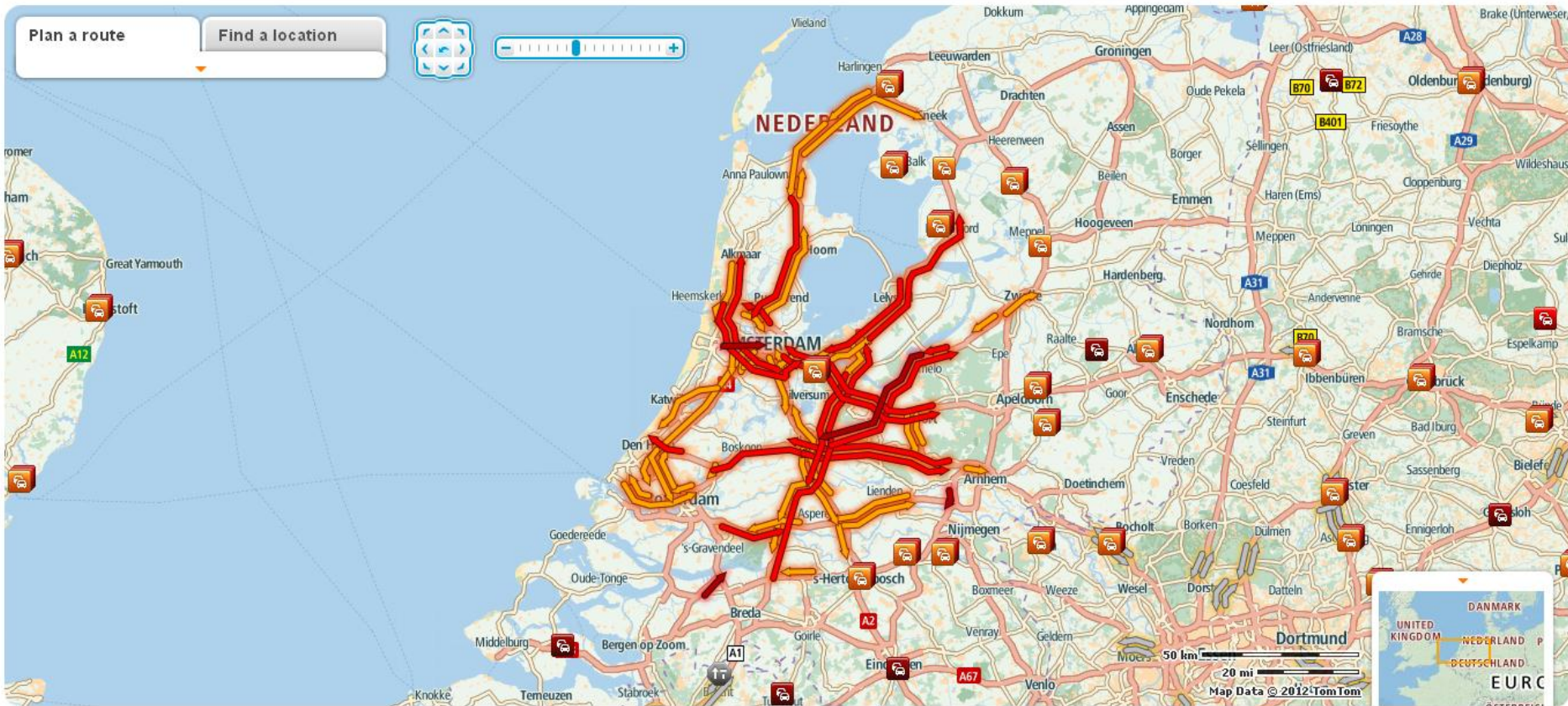
## Route Planner

[Link](#) | [Legend](#) | [Help](#) | [Print](#) | [Home location](#)

Show traffic information  
updated 1 min ago

Plan a route

Find a location



Copyright © 2012 TomTom International B.V. All rights reserved. [Terms of use](#)

# www.tomtom.com/livetraffic



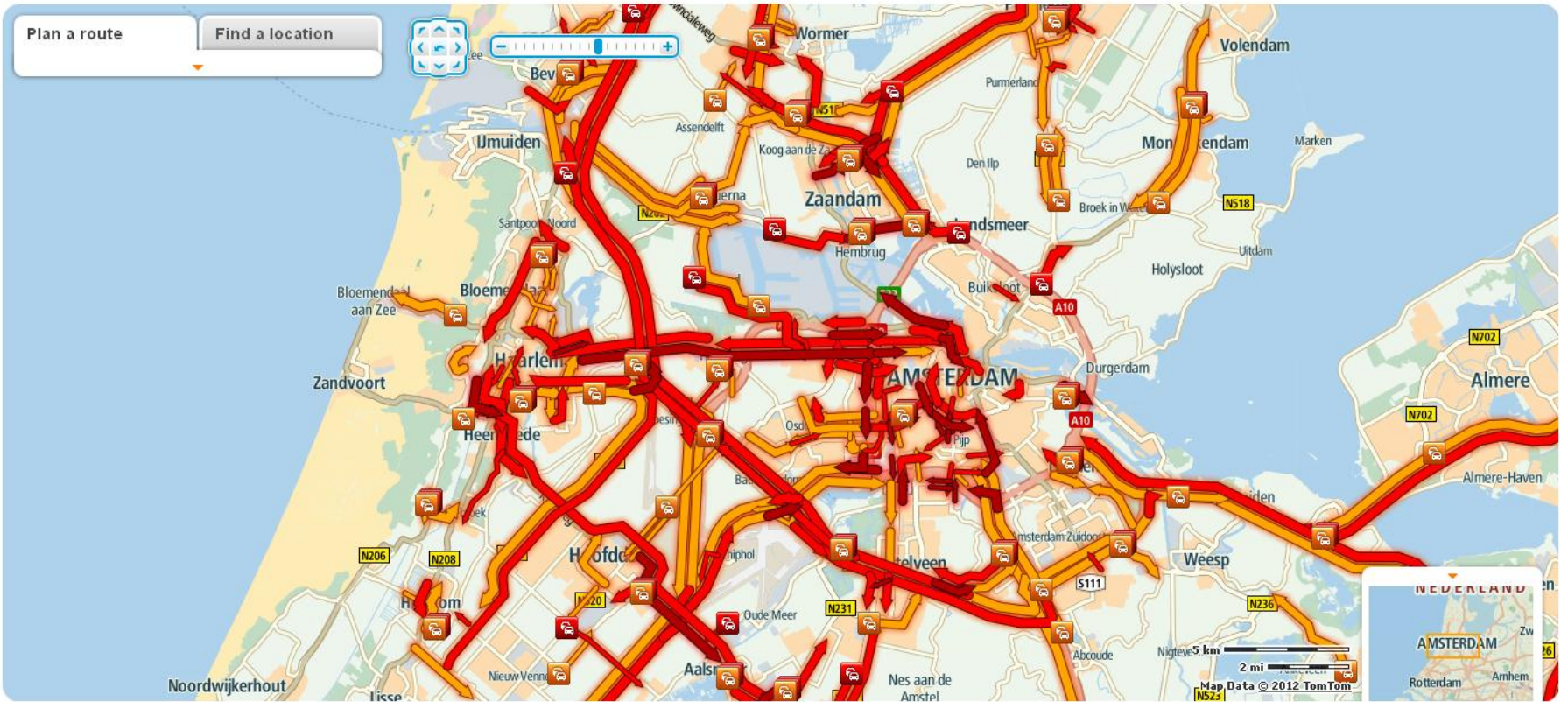
Shopping cart | MyTomTom login | Create account

Home | Products | Maps | Services | Live Traffic | Where to Buy | Support | About TomTom | English

## Route Planner

Link | Legend | Help | Print | Home location

Show traffic information updated 2 min ago



Copyright © 2012 TomTom International B.V. All rights reserved. Terms of use





# www.tomtom.com/livetraffic



[Shopping cart](#) | [MyTomTom login](#) | [Create account](#)

[Home](#) | [Products](#) | [Maps](#) | [Services](#) | [Live Traffic](#) | [Where to Buy](#) | [Support](#) | [About TomTom](#)

English

## Route Planner

[Link](#) | [Legend](#) | [Help](#) | [Print](#) | [Home location](#)

Show traffic information  
updated 2 min ago



Copyright © 2012 TomTom International B.V. All rights reserved. [Terms of use](#)





# www.tomtom.com/livetraffic



[Shopping cart](#) | [MyTomTom login](#) | [Create account](#)

[Home](#) | [Products](#) | [Maps](#) | [Services](#) | [Live Traffic](#) | [Where to Buy](#) | [Support](#) | [About TomTom](#)

English

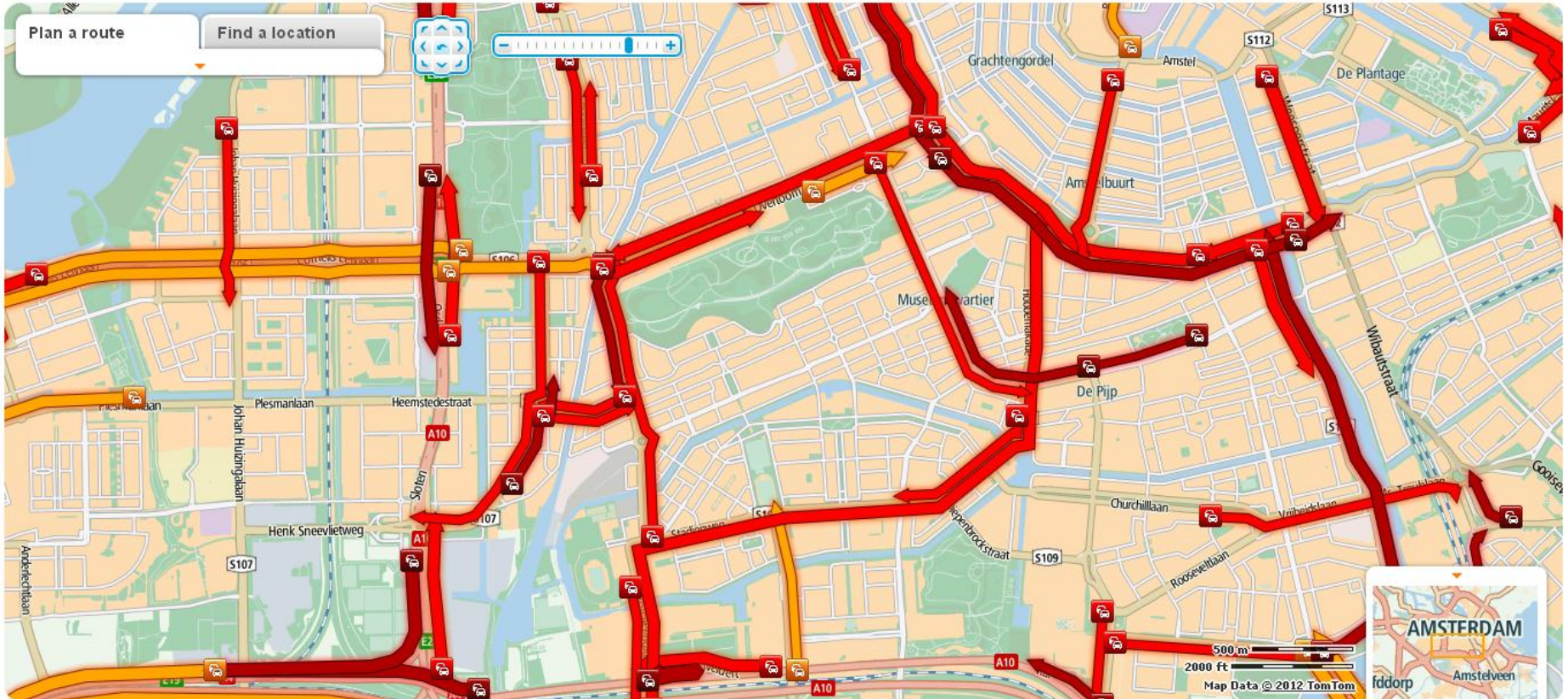
## Route Planner

[Link](#) [Legend](#) [Help](#) [Print](#) [Home location](#)

Show traffic information  
updated 1 min ago

Plan a route

Find a location

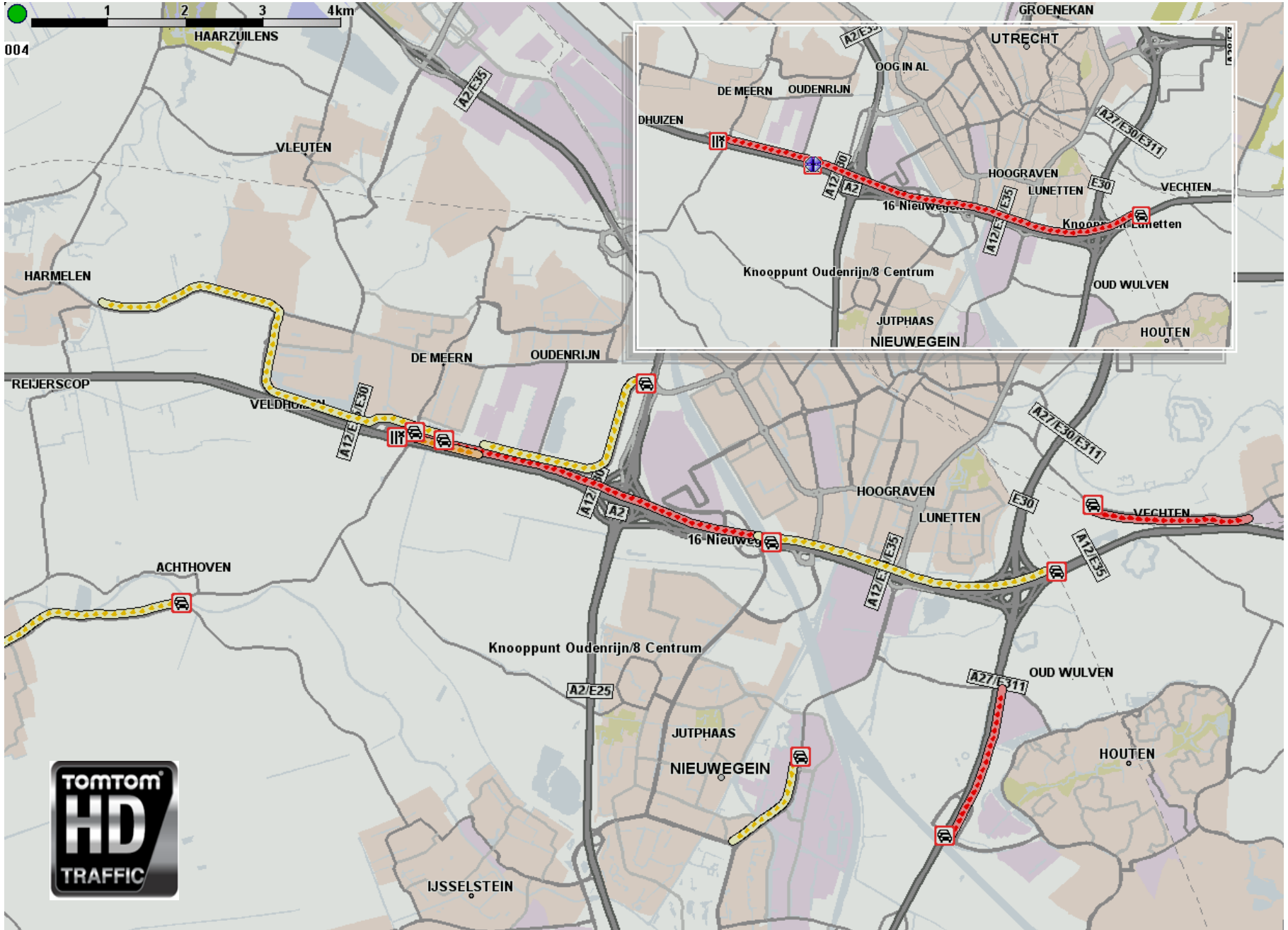


Copyright © 2012 TomTom International B.V. All rights reserved. [Terms of use](#)

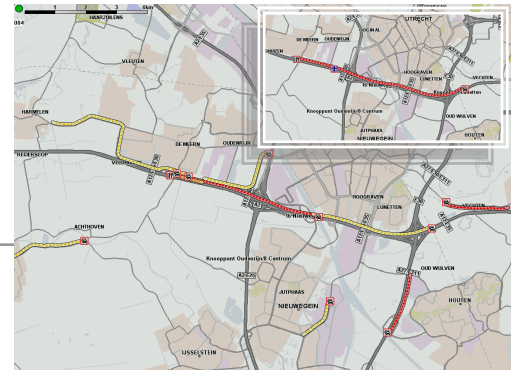




004



# Thesis



- Traffic management is moving towards a self-regulating system of well-informed individuals, within legal and societal desired limits
- Proper traffic management needs information coverage beyond High-Level Network, eventually even full coverage
- Full coverage needs Floating Car Data
- Floating Car Data will in practice a market driven technology (it needs in-car devices, has to prevent privacy problems and more)
- But: Road Authority will always remain responsible for what's happening on their roads

→ Ergo: proper traffic management needs public private partnerships

## Value proposition for B2B & B2G

---

TomTom extends the value of its:

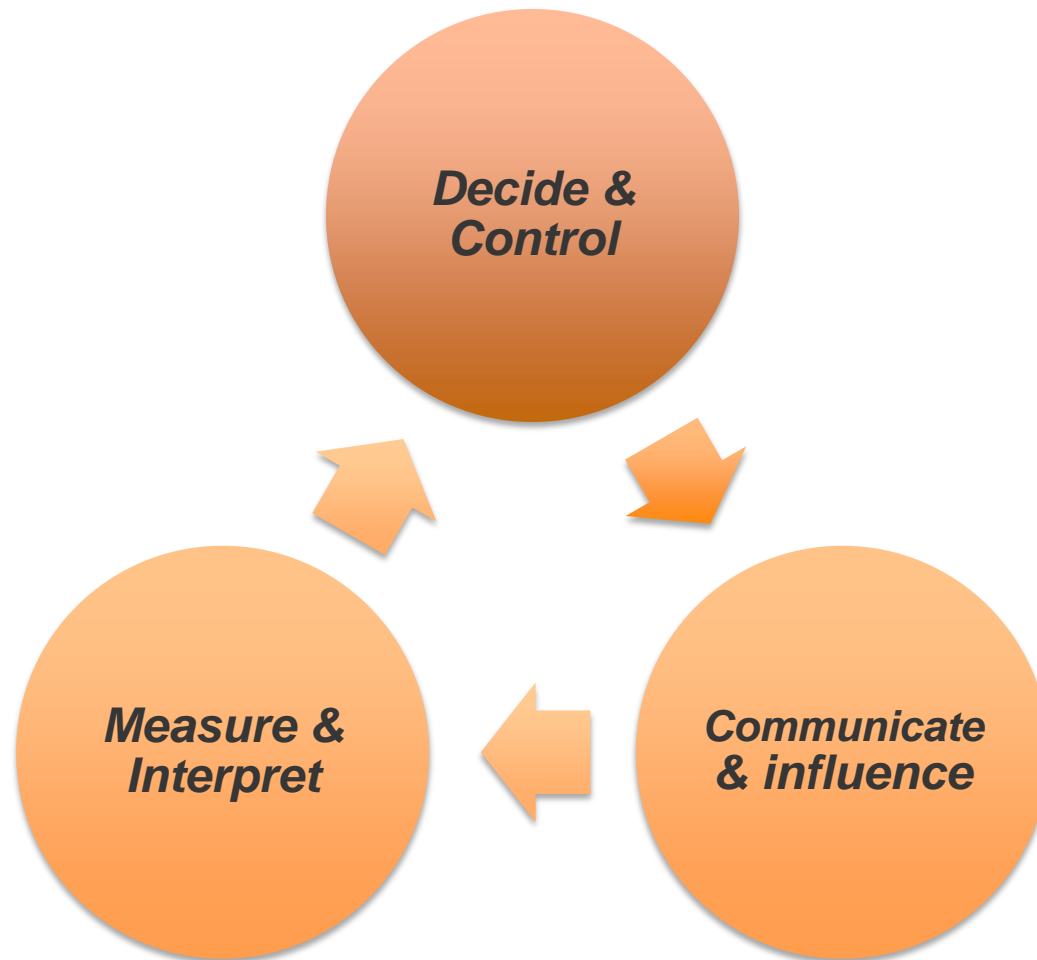
1. Dynamic Traffic feed
2. Historical Database

...to business and governments and jointly make traffic management drastically more efficient as well as effective...



# Traffic Management

---



# Traffic Management

## The traditional way

### Traffic Management Centers

*Low degree of automation, high human capital cost, inflexible, only feasible for big cities or regions*



### Data-acquisition

*Infrastructure based, high cost, high maintenance, non-scalable equipment*



### Top-down traffic control

*Influence drivers behavior via top-down traffic management using public signing*

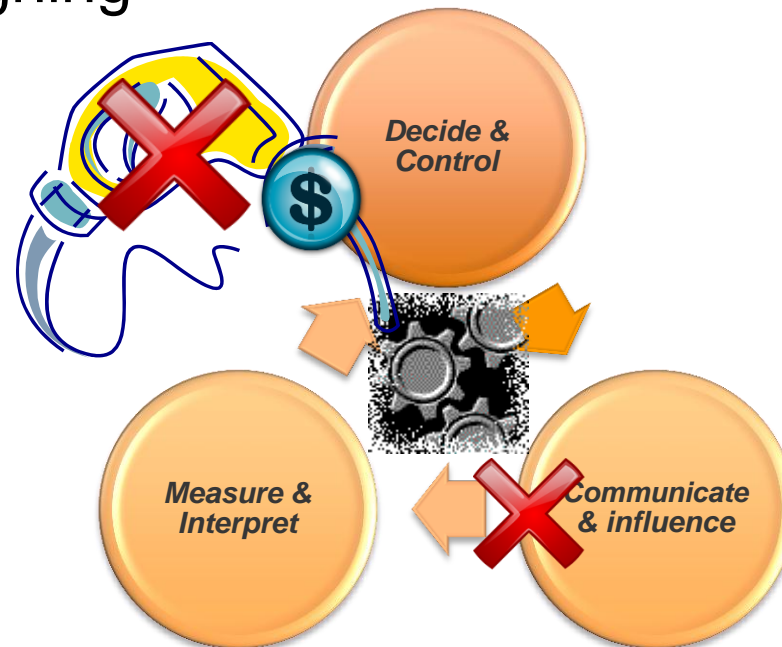




# Main Traffic Management problems for Road Authorities

---

1. Efficiency: Traffic Management is getting too expensive for road authorities to fuel the cycle
2. Effectiveness: People follow in-car devices instead of public signing



# Traffic Management

## The new way: In-car Centric Traffic Management

### Traffic Management Centers

*More data leads to increased automation*



### Buy data iso measuring

*Data offered by market, mainly FCD based*



*Interpret*

### Steer via in-car information

*In Public Private Partnerships*

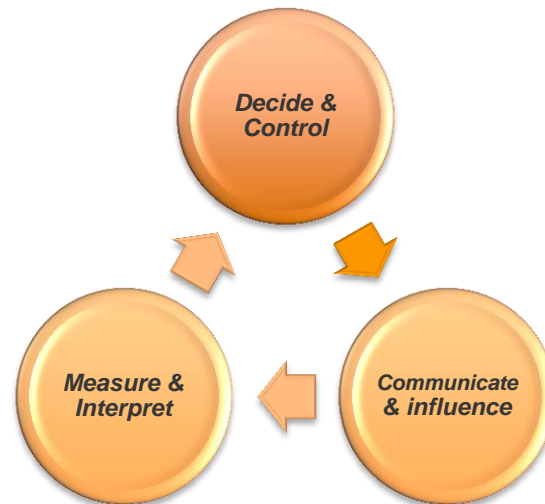


**TOMTOM** 

# In-car Centric Traffic Management's win-win-winners:

---

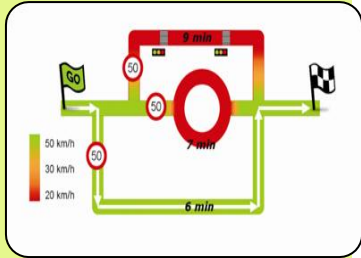
1. **Government:** Save money, receive more and better data, better traffic management
2. **Consumer:** Better routing experience, better information, cleaner, safer and more efficient driving
3. **Industry:** Revenue from road authorities (data) and consumer market (new in-car solutions)



# Product Portfolio

## Historical Traffic

### Speed Profiles



**Description** Compact file of expected travel time on each road every 5 minutes

**Typical use cases** Dynamic Nav. best fastest route  
Logistics Planning efficient routing

**Linked to MultiNet** Yes

**Web Portal access** No

**API access** No

### Custom Travel Times



**Description** Route based custom analysis of travel time reliability and bottlenecks

**Typical use cases** Traffic Planning travel time reliability & bottleneck analysis

**Linked to MultiNet** No

**Web Portal access** Yes

**API access** No

### Custom Area Analysis



**Description** Travel times and speeds for custom dates & times for regional analysis

**Typical use cases** Traffic Planning travel time reliability & bottleneck analysis

**Linked to MultiNet** No

**Web Portal access** Yes

**API access** Yes

### Custom Probe Counts



**Description** Proxy estimation for relative traffic volume on primary and secondary roads

**Typical use cases** Site Selection adverts / new build  
Insurance risk assesment


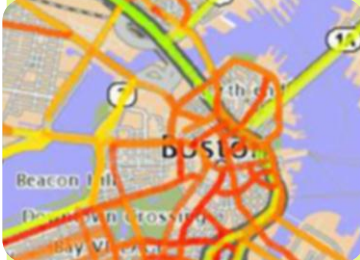

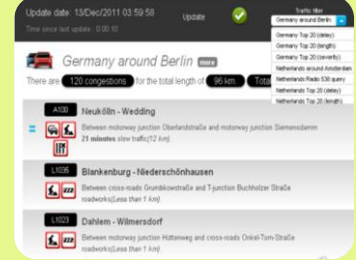


**Linked to MultiNet** Yes

**Web Portal access** No

**API access** Yes

# Product Portfolio

## Real-Time Traffic

	<b>HD Traffic Enterprise Traffic</b> 	<b>HD Flow</b> 	<b>HD Route Times</b> 	<b>DJ Portal</b> 
Description	Compact feed only detailing roads affected by delays and incidents	Complete feed detailing flow conditions on all significant selected roads in the region	Travel time & delay times on customer-defined routes. Complete turnkey solution	Customized local information showing key regional incidents and delays
Typical use cases	Dynamic Nav. Internet Display	Traffic Management Dynamic Nav. Internet Display	Traffic Management Event Management Kiosk/Office Screen	Radio drive time
Update frequency	1 minute (server) / 2 minutes (device)	1 minute to server	1 minute to server	1 minute
Location Referencing	TMC & OpenLR	TMC & OpenLR	Customer reference	Text reference
Delivery to servers	XML Datex2 	XML Datex2 	XML	Web portal
Delivery to devices	TomTom (proprietary) (+ soon TPEG-TEC)	N/A (soon TPEG-TFP)	N/A	N/A