

DATEX II profile for traffic signs (static part)

ASFINAG

Version 00-01-00

A.1 Overview

ASFINAG provides DATEX II traffic information of Austrian motorways for service providers and other interested institutions. This profile describes the message content for the static part of traffic signs using the VMS table publication. There is a second document describing the dynamic information.

Location referencing can be done by PointByCoordinates (description not included in this document).

ASFINAG specific documentation (for example the basis of computation) is accentuated in colour.

A.2 Data Dictionary for "ASFINAG traffic signs static part"

A.2.1 "VmsTablePublication" package

A.2.1.1 "VmsTablePublication" package classes

Class name	Designation	Definition	Stereotype	Abstract
VmsRecord	VMS record	A sub-record in the VMS Unit table defining the characteristics of a single variable message sign that is controlled by a specific VMS unit. Locations are on or adjacent to the road network but may be updated over time if relating to a mobile VMS unit.		no
VmsTablePublication	VMS table publication	A publication containing one or more VMS Unit Tables each comprising a set of records which hold details of VMS units.		no
VmsUnitRecord	VMS unit record	A versioned single VMS unit entry/record in the VMS Unit table that defines the characteristics of the VMS unit.	versionedIdentifiable	no
VmsUnitTable	VMS unit table	A versioned VMS Unit Table comprising a number of data records, each record defining the characteristics of a specific deployed variable message sign unit.	versionedIdentifiable	no

Table 1— Classes of the "VmsTablePublication" package

A.2.1.2 "VmsTablePublication" package association roles

Class name	Role name	Designation	Definition	Multiplicity	Target
VmsRecord	vmsLocation	VMS location	The point location of the variable message sign. For mobile VMS which are regularly moved this need not be provided. Instead the VMS location should be provided in the VmsPublication along with current settings.	0..1	Location

Table 2— Associations of the "VmsTablePublication" package

A.2.1.3 "VmsTablePublication" package attributes

Class name	Attribute name	Designation	Definition	Multiplicity	Type
VmsRecord	vmsPhysicalMounting	VMS physical mounting	Description of how the VMS is physically mounted or deployed on the road.	0..1	PhysicalMountingEnum
VmsUnitRecord	numberOfVms	Number of VMS	Number of variable message signs controlled by the unit.	0..1	NonNegativeInteger
VmsUnitTable	vmsUnitTableIdentification	VMS unit table identification	An alphanumeric identification for the VMS Unit table, possibly human readable.	0..1	String

Table 3— Attributes of the "VmsTablePublication" package

A.3 Data Dictionary of <<datatypes>> for "ASFINAG traffic signs static part"

There are no datatypes for "ASFINAG traffic signs static part".

A.4 Data Dictionary of <<enumerations>> for "ASFINAG traffic signs static part"

This clause contains the definitions of all enumerations which are used in the "ASFINAG traffic signs static part".

A.4.1 The <<enumeration>> "PhysicalMountingEnum"

The ways in which equipments such as VMS are mounted or deployed on the road.

Enumerated value name	Designation	Definition
centralReservationMounted	Central reservation mounted	Equipment mounted in the central reservation.
gantryMounted	Gantry mounted	Equipment mounted on an overhead gantry across the roadway.
overheadBridgeMounted	Overhead bridge mounted	Equipment mounted overhead on a bridge structure.
roadsideCantileverMounted	Roadside cantilever mounted	Equipment mounted on a cantilever from the roadside.
roadsideMounted	Roadside mounted	Equipment mounted at the roadside.
trailerMounted	Trailer mounted	Equipment mounted on a movable trailer.
tunnelEntranceMounted	Tunnel entrance mounted	Equipment mounted on the entrance to a tunnel.
vehicleMounted	Vehicle mounted	Equipment mounted on a vehicle.

Table 4— Values contained in the enumeration "PhysicalMountingEnum"

A.5 Alphabetical list of attributes

Attribute name	Class name	Designation	Definition	Multiplicity	Type
numberOfVms	VmsUnitRecord	Number of VMS	Number of variable message signs controlled by the unit.	0..1	NonNegativeInteger
vmsPhysicalMounting	VmsRecord	VMS physical mounting	Description of how the VMS is physically mounted or deployed on the road.	0..1	PhysicalMountingEnum
vmsUnitTableIdentification	VmsUnitTable	VMS unit table identification	An alphanumeric identification for the VMS Unit table, possibly human readable.	0..1	String

Table 5- Alphabetical list of attributes

A.6 Alphabetical list of roles

Role name	Class name	Designation	Definition	Multiplicity	Target
vmsLocation	VmsRecord	VMS location	The point location of the variable message sign. For mobile VMS which are regularly moved this need not be provided. Instead the VMS location should be provided in the VmsPublication along with current settings.	0..1	Location

Table 6- Alphabetical list of roles

A.7 Figure

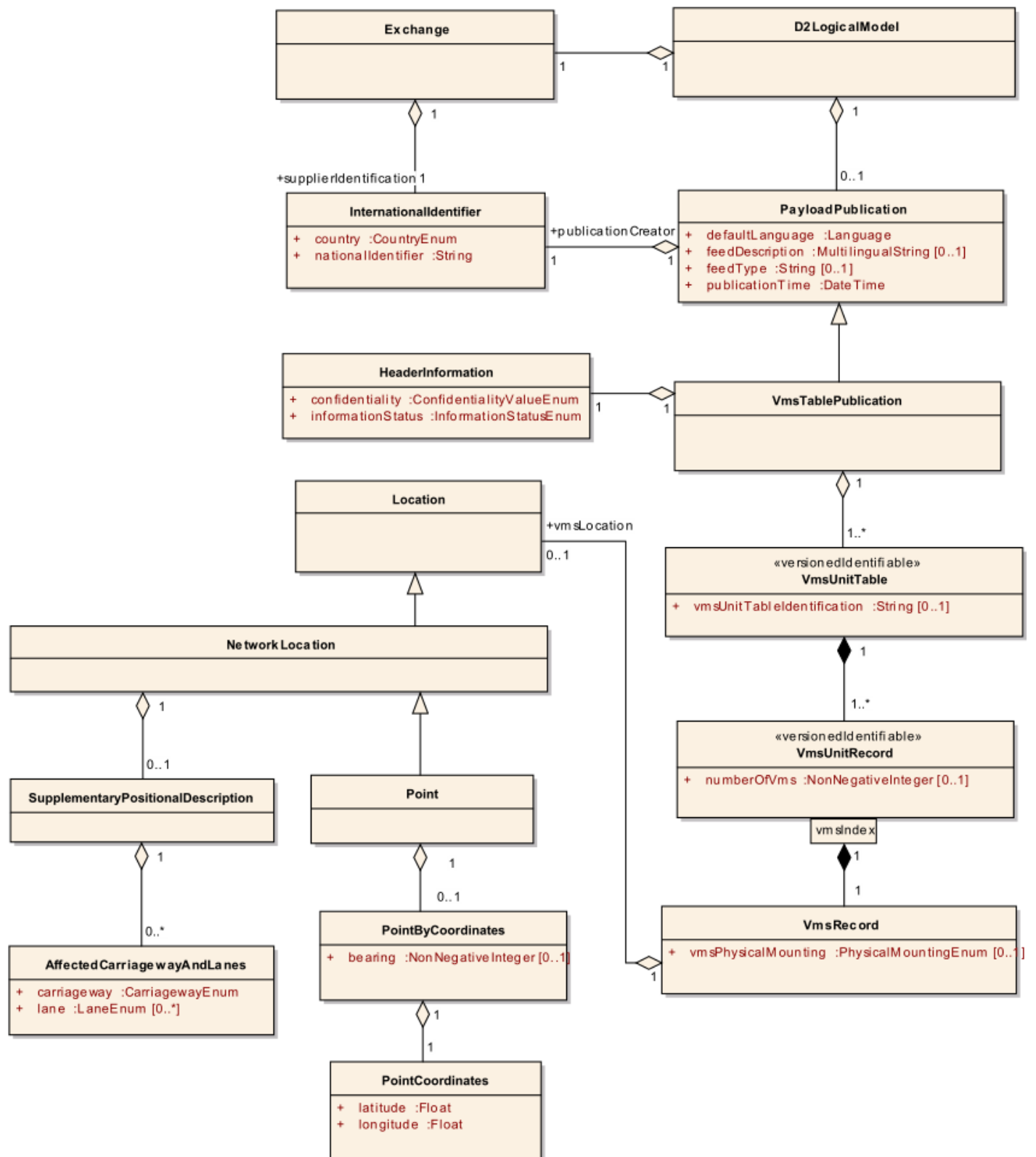


Figure 1: Static part of ASFINAG traffic signs