

# DATEX II profile for Intelligent Truck Parking EU compliant – Dynamic part

## ASFINAG

Version 00-02-00

### A.1 Overview

ASFINAG provides DATEX II traffic information of Austrian motorways for service providers and other interested institutions. This profile describes the message content for the Static Part of Intelligent Truck Parking. It is limited to elements that are specified in the corresponding EU Regulation 885/2013 (including a very little set of further optional elements that make the profile smoothly) as well as some more optional elements selected by ASFINAG.

The DATEX standard location referencing methods are not included in this document. ASFINAG specific documentation is accentuated in colour.

### A.2 Data Dictionary for "ASFINAG Intelligent Truck Parking EU complaint - Dynamic Part"

#### A.2.1 "GenericPublication" package

##### A.2.1.1 "GenericPublication" package classes

Class name	Designation	Definition	Stereotype	Abstract
GenericPublication	Generic publication	A publication used to make level B extensions at the publication level.		no

Table 1— Classes of the "GenericPublication" package

##### A.2.1.2 "GenericPublication" package association roles

There are no defined association roles in the "GenericPublication" package.

##### A.2.1.3 "GenericPublication" package attributes

Class name	Attribute name	Designation	Definition	Multiplicity	Type
GenericPublication	genericPublicationName	Generic publication name	The name of the generic publication.	1..1	String

Table 2— Attributes of the "GenericPublication" package

## A.2.2 "ParkingRecordStatus" package

### A.2.2.1 "ParkingRecordStatus" package classes

Class name	Designation	Definition	Stereotype	Abstract
GroupOfParkingSpacesStatus	Group of parking spaces status	The status of the assigned parking spaces in the specified parking site, i.e. the status of those spaces assigned for particular types of person or vehicle and/or for specific duration types (e.g. short stay).		no
ParkingOccupancy	Parking occupancy	Parking capacity information for the parking site as well as for AssignedParkingSpaces.		no
ParkingRecordStatus	Parking record status	Contains the current status of one parking record defined in the static model (i.e. parking site or group of parking sites) or historical or forecasted data for one parking. Only for the second case, 'parkingStatusTime' must be specified.		yes
ParkingSiteStatus	Parking site status	Dynamic status information for the static object 'ParkingSite'.		no

**Table 3— Classes of the "ParkingRecordStatus" package**

### A.2.2.2 "ParkingRecordStatus" package association roles

There are no defined association roles in the "ParkingRecordStatus" package.

### A.2.2.3 "ParkingRecordStatus" package attributes

Class name	Attribute name	Designation	Definition	Multiplicity	Type
GroupOfParkingSpacesStatus	groupOfParkingSpacesClosed	Group of parking spaces closed	True: The group of parking spaces is closed / not accessible. False or omitted: The group of parking spaces is accessible. This is no statement about its occupation.	0..1	Boolean
ParkingOccupancy	parkingNumberOfSpacesOverride	Parking number of spaces override	Possibility to override the static value 'parkingNumberOfSpaces'.	0..1	NonNegativeInteger
	parkingNumberOfVacantSpaces	Parking number of vacant spaces	The total number of currently vacant parking spaces available in the specified parking site, group of parking sites or group of parking spaces.	0..1	NonNegativeInteger
ParkingRecordStatus	parkingRecordReference	Parking record reference	A reference to a static parking record object, i.e. a parking site or a group of parking sites.	1..1	VersionedReference
	parkingStatusDescription	Parking status description	Additional textual information about the parking status. Can also be used as an alternative in case the enumeration values for 'parkingSiteStatus' or 'groupOfParkingSitesStatus' do not fit.	0..1	MultilingualString
	parkingStatusOriginTime	Parking status origin time	The time when the information in this message was generated. Unless 'ParkingStatusValidity' is used, this is also the time the information in this message refers to.	1..1	DateTime
ParkingSiteStatus	parkingSiteOpeningStatus	Parking site opening status	The opening status of the parking site (open or not).	1..1	OpeningStatusEnum
	parkingSiteStatus	Parking site status	The status of the parking site (spaces available or not).	1..1	ParkingSiteStatusEnum

**Table 4— Attributes of the "ParkingRecordStatus" package**

### A.2.3 "ParkingStatusPublication" package

#### A.2.3.1 "ParkingStatusPublication" package classes

Class name	Designation	Definition	Stereotype	Abstract
ParkingStatusPublication	Parking status publication	A publication containing the current status of one or more parking sites and/or group of parking sites.		no

Table 5— Classes of the "ParkingStatusPublication" package

#### A.2.3.2 "ParkingStatusPublication" package association roles

There are no defined association roles in the "ParkingStatusPublication" package.

#### A.2.3.3 "ParkingStatusPublication" package attributes

Class name	Attribute name	Designation	Definition	Multiplicity	Type
ParkingStatusPublication	parkingTableReference	Parking table reference	It is possible to limit the publication to one or more ParkingTable and to set a reference to these tables here.	0..*	VersionedReference

Table 6— Attributes of the "ParkingStatusPublication" package

### A.3 Data Dictionary of <<datatypes>> for "ASFINAG Intelligent Truck Parking EU complaint - Dynamic Part"

There are no defined datatypes used in the "ASFINAG Intelligent Truck Parking EU complaint - Dynamic Part".

## A.4 Data Dictionary of <<enumerations>> for "ASFINAG Intelligent Truck Parking EU complaint - Dynamic Part"

This clause contains the definitions of all enumerations which are used in the "ASFINAG Intelligent Truck Parking EU complaint - Dynamic Part".

### A.4.1 The <<enumeration>> "OpeningStatusEnum"

The opening status of some entity (e.g. parking site, service facility, access,...)

Enumerated value name	Designation	Definition
closed	Closed	Closed, usually because of the regular opening times.
closedAbnormal	Closed abnormal	Closed because of some scheduled or unscheduled event, like holiday, maintenance, construction works or any kind of problems. It is possible that the closure will last for some time.
open	Open	Open resp. available.
openingTimesInForce	Opening times in force	The normal opening times are in force, i.e. it is not explicit said if it's open right now.
other	Other	Other.
statusUnknown	Status unknown	The opening status is unknown.

**Table 7— Values contained in the enumeration "OpeningStatusEnum"**

#### A.4.2 The <<enumeration>> "ParkingSiteStatusEnum"

The status of the parking site (spaces available or not).

Enumerated value name	Designation	Definition
almostFull	Almost full	The parking site is almost full (as defined by its configuration parameters).
full	Full	The parking site is full (as defined by its configuration parameters).
fullAtEntrance	Full at entrance	The parking site is considered full at its entrance (e.g. full sign is displayed at entrance or on managing VMS).
other	Other	Other.
spacesAvailable	Spaces available	Parking spaces are currently available.
unknown	Unknown	The status of the parking site is unknown.

**Table 8— Values contained in the enumeration "ParkingSiteStatusEnum"**

#### A.5 Alphabetical list of attributes

Attribute name	Class name	Designation	Definition	Multiplicity	Type
genericPublicationName	GenericPublication	Generic publication name	The name of the generic publication.	1..1	String
groupOfParkingSpacesClosed	GroupOfParkingSpacesStatus	Group of parking spaces closed	True: The group of parking spaces is closed / not accessible. False or omitted: The group of parking spaces is accessible. This is no statement about its occupation.	0..1	Boolean
parkingNumberOfSpacesOverride	ParkingOccupancy	Parking number of spaces override	Possibility to override the static value 'parkingNumberOfSpaces'.	0..1	NonNegativeInteger
parkingNumberOfVacantSpaces	ParkingOccupancy	Parking number of vacant spaces	The total number of currently vacant parking spaces available in the specified parking site, group of parking sites or group of parking spaces.	0..1	NonNegativeInteger
parkingRecordReference	ParkingRecordStatus	Parking record reference	A reference to a static parking record object, i.e. a parking site or a group of parking sites.	1..1	VersionedReference

parkingSiteOpeningStatus	ParkingSiteStatus	Parking site opening status	The opening status of the parking site (open or not).	1..1	OpeningStatusEnum
parkingSiteStatus	ParkingSiteStatus	Parking site status	The status of the parking site (spaces available or not).	1..1	ParkingSiteStatusEnum
parkingStatusDescription	ParkingRecordStatus	Parking status description	Additional textual information about the parking status. Can also be used as an alternative in case the enumeration values for 'parkingSiteStatus' or 'groupOfParkingSitesStatus' do not fit.	0..1	MultilingualString
parkingStatusOriginTime	ParkingRecordStatus	Parking status origin time	The time when the information in this message was generated. Unless 'ParkingStatusValidity' is used, this is also the time the information in this message refers to.	1..1	DateTime
parkingTableReference	ParkingStatusPublication	Parking table reference	It is possible to limit the publication to one or more ParkingTable and to set a reference to these tables here.	0..*	VersionedReference

**Table 9- Alphabetical list of attributes**

## **A.6 Alphabetical list of roles**

There are no defined roles used in the "ASFINAG Intelligent Truck Parking EU complaint - Dynamic Part".

## A.7 Figure

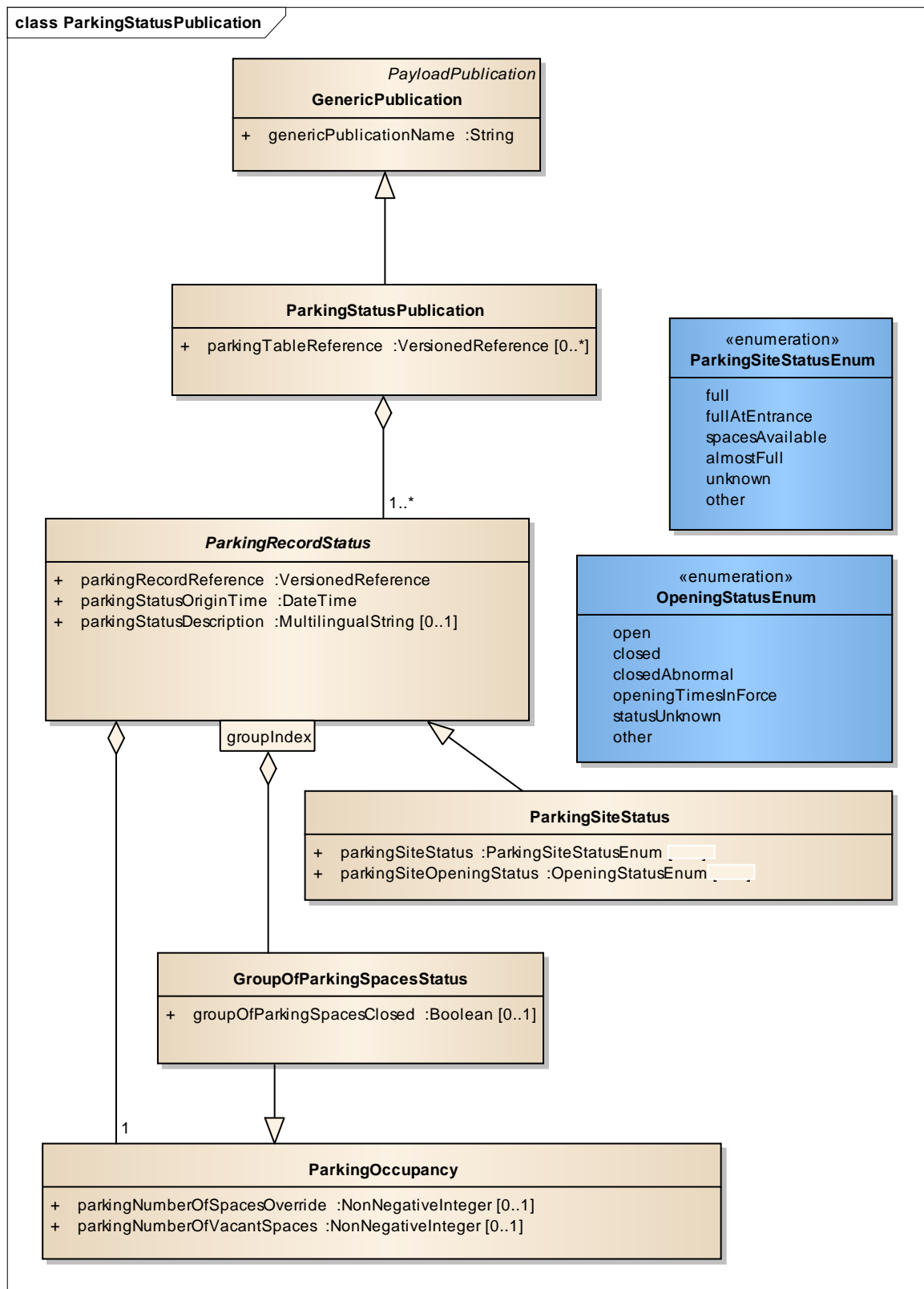


Figure 1 - ParkingStatusPublication