

# Proposed Data Quality Extension Publication

## Introduction

This is an initial draft of a proposed level b extension for a data quality publication which provides a statement of generic quality metadata consistent with the guidelines specified in ISO/TR21707.

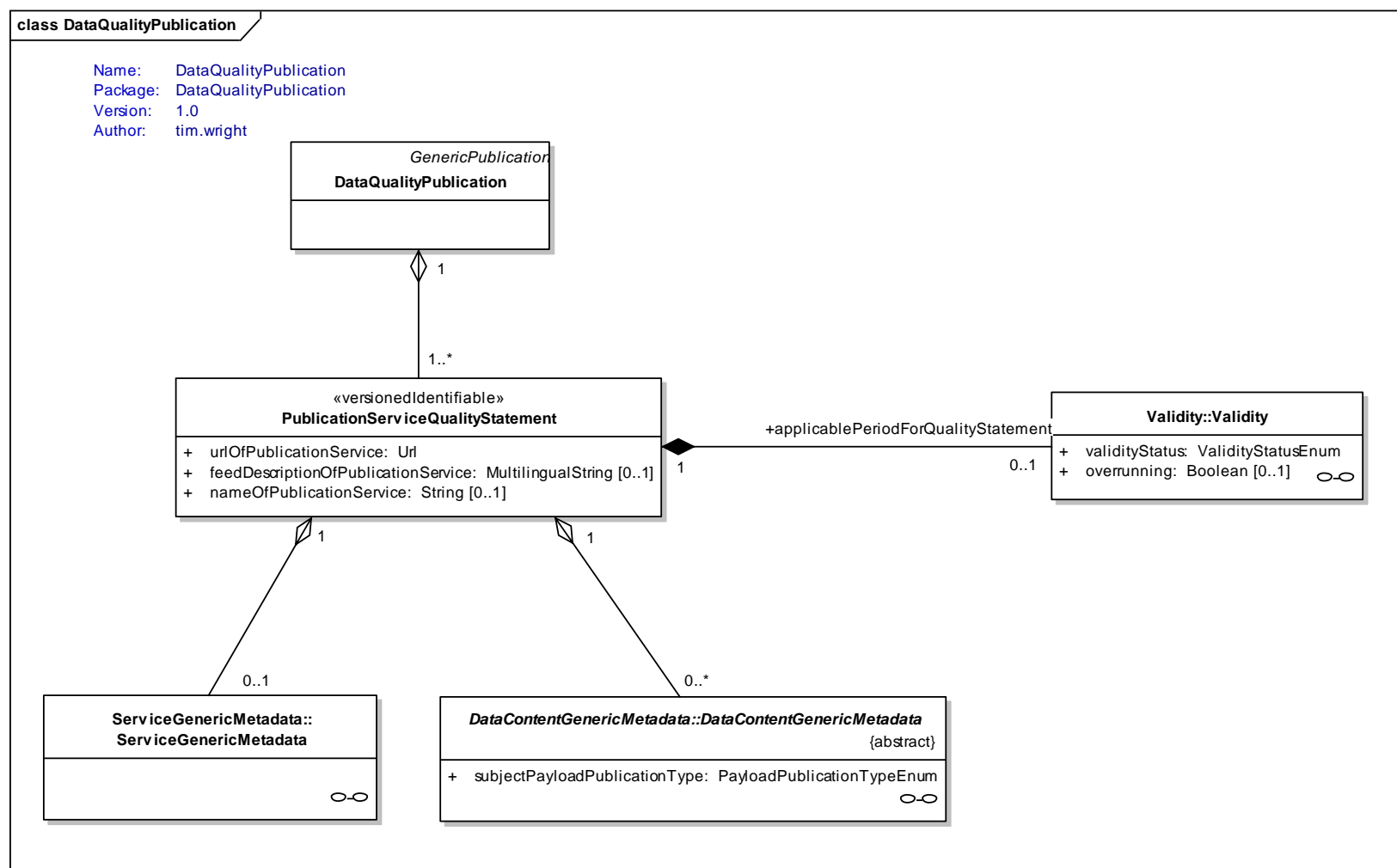
The publication contains quality metadata statements for one or more different services from a supplier over different defined periods. For instance for a given service a supplier may provide different qualities of service at different times of the day or over certain periods when equipment maintenance work is scheduled.

The metadata for each service is modelled in two parts, one part containing metadata relating to the overall service and a second part containing metadata for individual elements of data content provided by the service. The information contained in this publication may be suitable for being referenced in a Service Level Agreement (SLA) between a supplier and consumer (client). It may even be provided prior to the commencement of a supplier's service to allow potential consumers time to evaluate what is going to be supplied.

The information contained in this publication is based on the guidance given in ISO/TR21707 and is applicable over a defined period of time. If no time period is specified then the quality metadata must be assumed to apply for the duration of the service or until such a time that a validity period is defined.

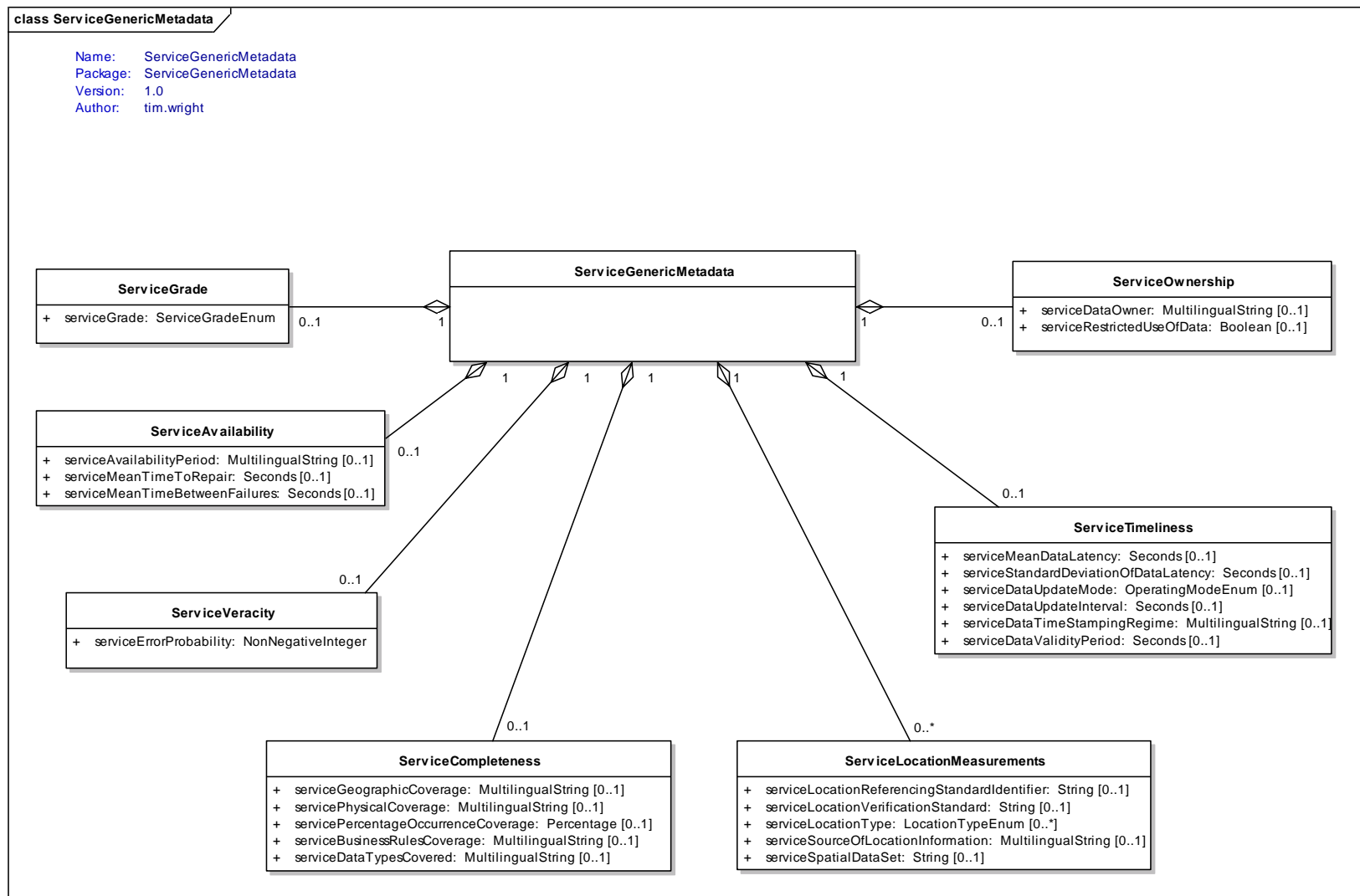
## DataQualityPublication

Each publication can contain a quality statement about a number of different services over different time periods or even the same service over different time periods. Each statement is split into a statement about the overall service and a statement about individual data elements of that service.



## ServiceGenericMetadata

The service generic metadata provides a statement of the quality of the overall service as a whole measured over time and is specified in terms of various parameters which closely follow the recommendations of ISO/TR21707.



## DataContentGenericMetadata

The data content generic metadata sub-model provides a statement of what the quality of individual elements of data published as part of the content of the specified service is anticipated to be. This provides measurements of quality over time for individual data values provided by the service. Again the actual quality parameters (e.g. precision, veracity) are consistent with ISO/T21707 recommendations.

